

CONSTRUCTION 101 PRE- APPRENTICESHIP TRAINING

4112 S. Main Street Los Angeles, CA 90037~(323) 432-3955

For more information visit us at : www.pvjobs.org

PVJOBS offers Construction 101; a 3 week pre apprenticeship training class that helps individuals prepare for high demand careers in the construction industry.

PVJOBS has **found employment for more than 8,000 people** in the construction field or related industries.

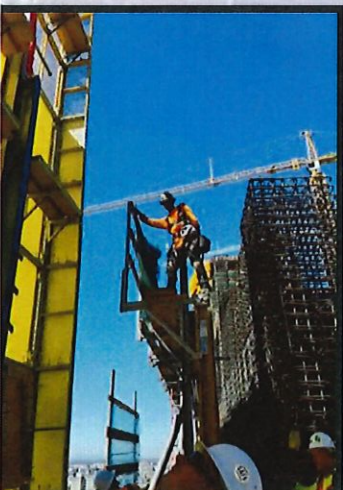
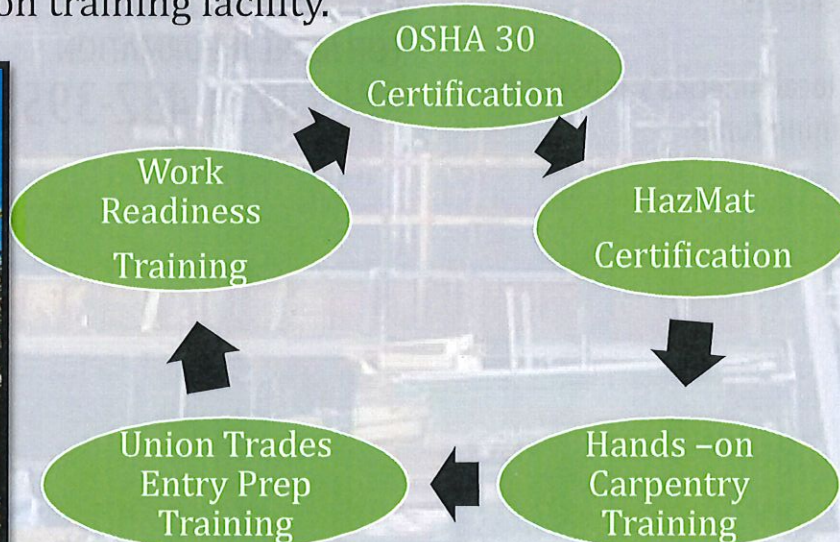
Eligibility Requirements:

- Right to work documents
- At least 17 years old
- Must enroll with an America's Job Center and be approved for training

Classes listed on I-Train under WLAC



Training activities include classroom courses, hands-on construction sessions in carpentry and a field trip to a union training facility.





Playa Vista Job Opportunities and Business Services

PRE-APPRENTICESHIP Construction 101

OSHA 30 CERTIFICATION

- OSHA 1926 Subpart C: General Safety and Health
- 29 CFR 1910 Subpart Z: Health Hazards in Construction: Hazard Communication
- OSHA 1926 Subpart D: Health Hazards in Construction: Hazardous Materials
- OSHA 1926 Subpart D: Process Safety Management
- OSHA 1926 Subpart E: Personal Protective Equipment

HazMat CERTIFICATION

- Hazardous Material Terminology
- Hazardous Material Compliance
- Hazard Communication Standards

WORKSITE SKILLS

- Understanding Workplace Skills for Today's Construction Environment
- Managing Time Effectively
- Learning How to Keep the Job

CONSTRUCTION TOOLS + MATERIALS

- Materials Handling and Storage
- Hand and Power Tools—Basic
- Welding and Cutting for Construction
- Electrical Safety for Construction

UNION TRADES ENTRY PREP

- Overview of union trades
- Mechanical reasoning application
- Union requirements and application process
- Tour of union training facility

Program Eligibility Requirements:

- Must be 17 and over
- Must be able to enroll in local America's Jobs Center
- Must be approved for training funds

GET CERTIFIED TODAY!

FOR MORE INFORMATION

CALL (323) 432-3955