

## Process Plant Technology Training

TIMELINE: 8 months

CREDIT/CERTIFICATION: certified CAPT curriculum certificate

COLLEGE UNITS: 30 college units

ESTIMATED SALARY: approx. \$70,000.00 starting salary

TRAINING FACILITIES: Los Angeles Harbor College

COURSE DESCRIPTION: 600+ hours of community college training in industry specific courses. Courses cover industry-specific topics such as Introduction to Industry, Safety, and Operating and Troubleshooting Equipment. Upon successful completion of the program, participants will have the opportunity to apply to our partner refineries to obtain full-time employment.

QUALIFICATIONS: Minimum 10th grade Reading, Writing, and Math level in addition to Program Qualifications.

## Instrumentation Technology Training

TIMELINE: 14 months

COLLEGE UNITS: 45 college units

ESTIMATED SALARY: \$ 55,000-\$70,000.00 starting salary

TRAINING FACILITIES: Los Angeles Harbor College

COURSE DESCRIPTION: 1000+ hours of community college training in industry specific courses. Courses cover a range of topics such as Fundamentals of Electronics and Programmable Logic Controls (PLC). Upon successful completion of the program, participants will have the opportunity to apply to our partner refineries to obtain full-time employment. Includes mandatory Bridge component.

QUALIFICATIONS: Background/experience in electronics or mechanics preferred. Minimum 12th grade Reading, Writing, and Math level in addition to Program Qualifications.

Please contact us!

The Energy Pathway Program staff is readily available to answer any questions regarding our programs.

Please feel free to contact a Workforce Development Specialist via phone to request more information.

## Staff

**Program Manager**

**Renetta G. Thorn**

**Learning Support Specialist**

**Meo Kittivanich**

**Workforce Development Specialist**

**Jamie Rimphanli**

**Charlie Sandoval**

**Veterans Support Specialist**

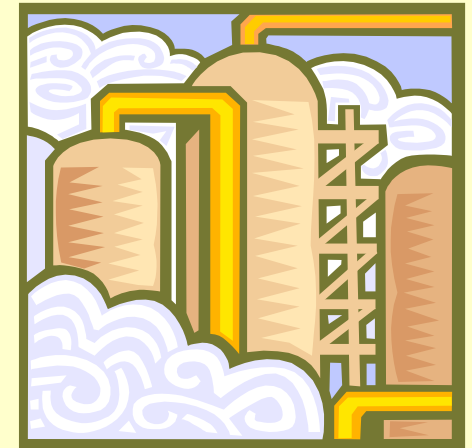
**Jhoselyn Ramirez**

**South Bay Center for Counseling  
ENERGY PATHWAY PROGRAM**

360 N. Sepulveda Blvd., Suite #2075  
El Segundo, CA 90245  
Phone: (310) 414-2090  
Fax: (310) 414-2096  
[www.sbaycenter.com](http://www.sbaycenter.com)



**SOUTH BAY CENTER FOR COUNSELING  
ENERGY PATHWAY  
PROGRAM**

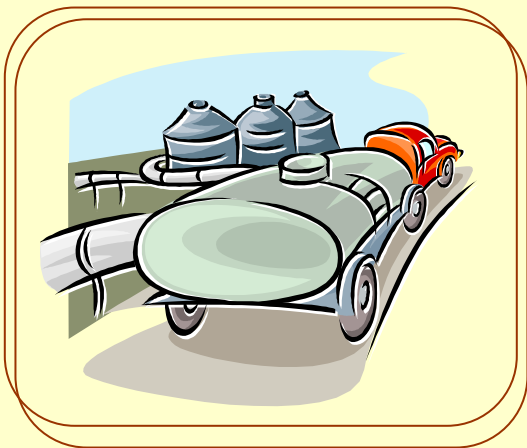




## Your Pathways to Success

As the current refinery workforce ages, Los Angeles area refineries are seeking new entry-level industry-specific workers.

**South Bay Center for Counseling, ConocoPhillips, BP, Valero, and ExxonMobil** have joined with the South Bay Center Family Support Collaboration, Employment Development Department, Los Angeles County Supervisor Don Knabe, Los Angeles Harbor College, Los Angeles Harbor Occupational Center, United Steel Workers union, United Way, Housing Authority of the City of Los Angeles, WelltechSafety, South Bay Workforce Investment Board, Beach Cities One Stop and the Long Beach Youth Opportunity Center to assist participants in obtaining training and providing the skills and competencies necessary to meet entry-level industry standards.



## Program Qualifications

- Right to work
- At least 18 years old
- High school diploma or GED
- Valid driver's license
- No misdemeanors or felonies within the last 7 years
- Ability to maintain and adhere to program schedule (includes days/nights and some weekends)
- Able to fulfill the requisites of refinery work:
  - Lift up to 50 lbs.
  - Climb up to a height of 200 ft.
  - Work in confined spaces, etc.

## Current Pathways

### Safety Attendant Training

**\*Interviews to be determined**

TIMELINE: 2 weeks

TRAINING FACILITIES: South Bay Center for Counseling/ WelltechSafety

COURSE DESCRIPTION: Training covers industry-specific topics such as Code of Safety Practices and Field Safety Training. Upon successful completion of the program, participants will have the opportunity to apply for part-time work during the refineries' turnaround seasons. After completing 1-2 turnaround seasons of Safety Attendant work, participants can apply for upgrade training.

QUALIFICATIONS: Minimum 8th grade Reading, Writing, and Math level in addition to Program Qualifications.

### Mechanical Helper Training

**\*Interviews to be determined**

TIMELINE: 2 months

TRAINING FACILITIES: South Bay Center for Counseling/ WelltechSafety

COURSE DESCRIPTION: Training includes an overview of safety policies and procedures and a tool "boot camp". Upon successful completion of the program, participants will have the opportunity to apply for part-time work during the refineries' turnaround seasons. After completing 1-2 turnaround seasons of Mechanical Helper work, participants can apply for upgrade training.

QUALIFICATIONS: Must have prior Safety Attendant training and experience. Minimum 9th grade Reading, Writing, and Math level in addition to Program Qualifications.

### **South Bay Center for Counseling ENERGY PATHWAY PROGRAM**

**360 N. Sepulveda Blvd., Suite #2075  
El Segundo, CA 90245  
Phone: (310) 414-2090  
Fax: (310) 414-2096  
[www.sbaycenter.com](http://www.sbaycenter.com)**