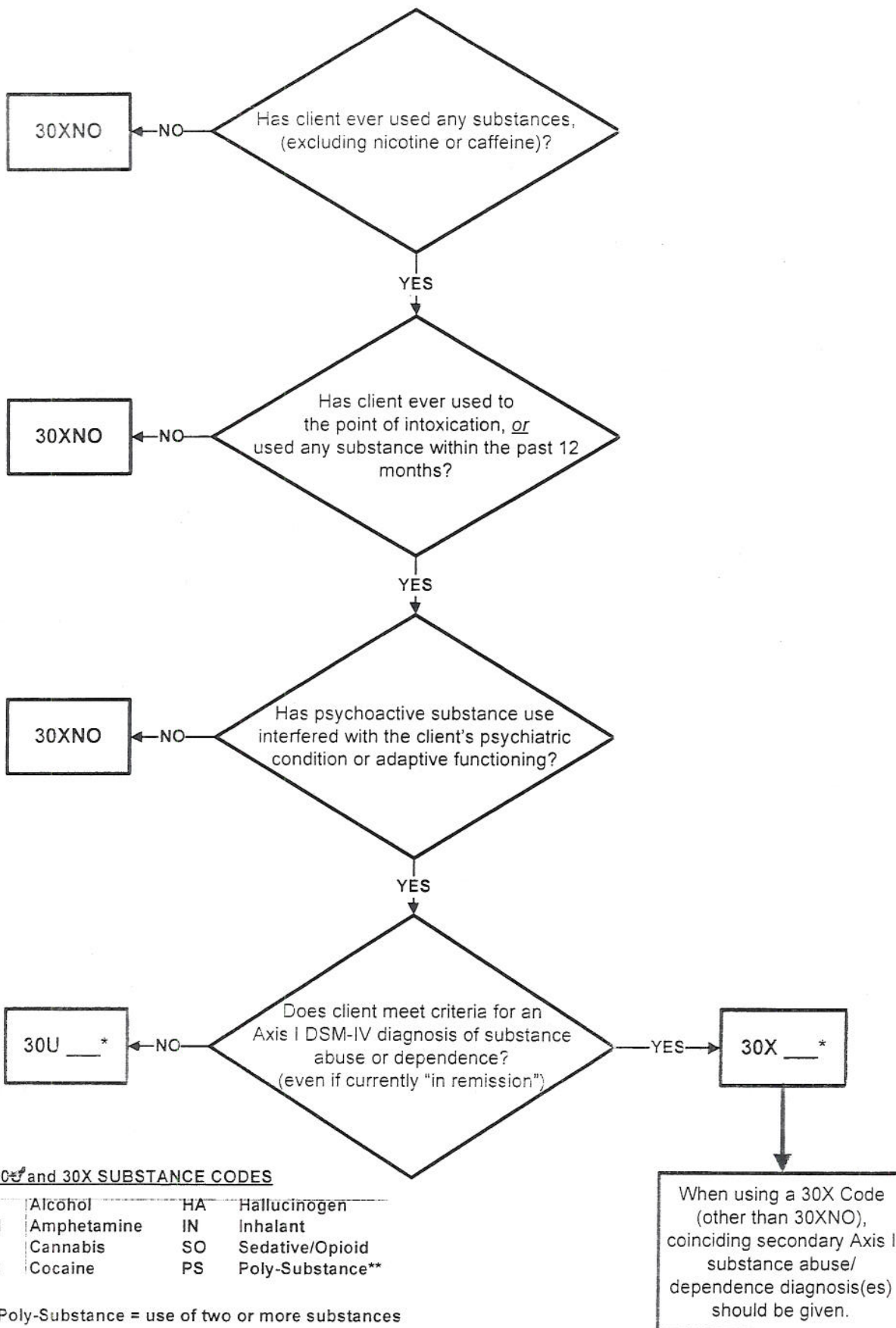


DUAL DIAGNOSIS CODE DECISION TREE



*** 30U and 30X SUBSTANCE CODES**

AL	Alcohol	HA	Hallucinogen
AM	Amphetamine	IN	Inhalant
MJ	Cannabis	SO	Sedative/Opioid
CO	Cocaine	PS	Poly-Substance**

** Poly-Substance = use of two or more substances